

# 2017 Environmental Priorities for MPCA

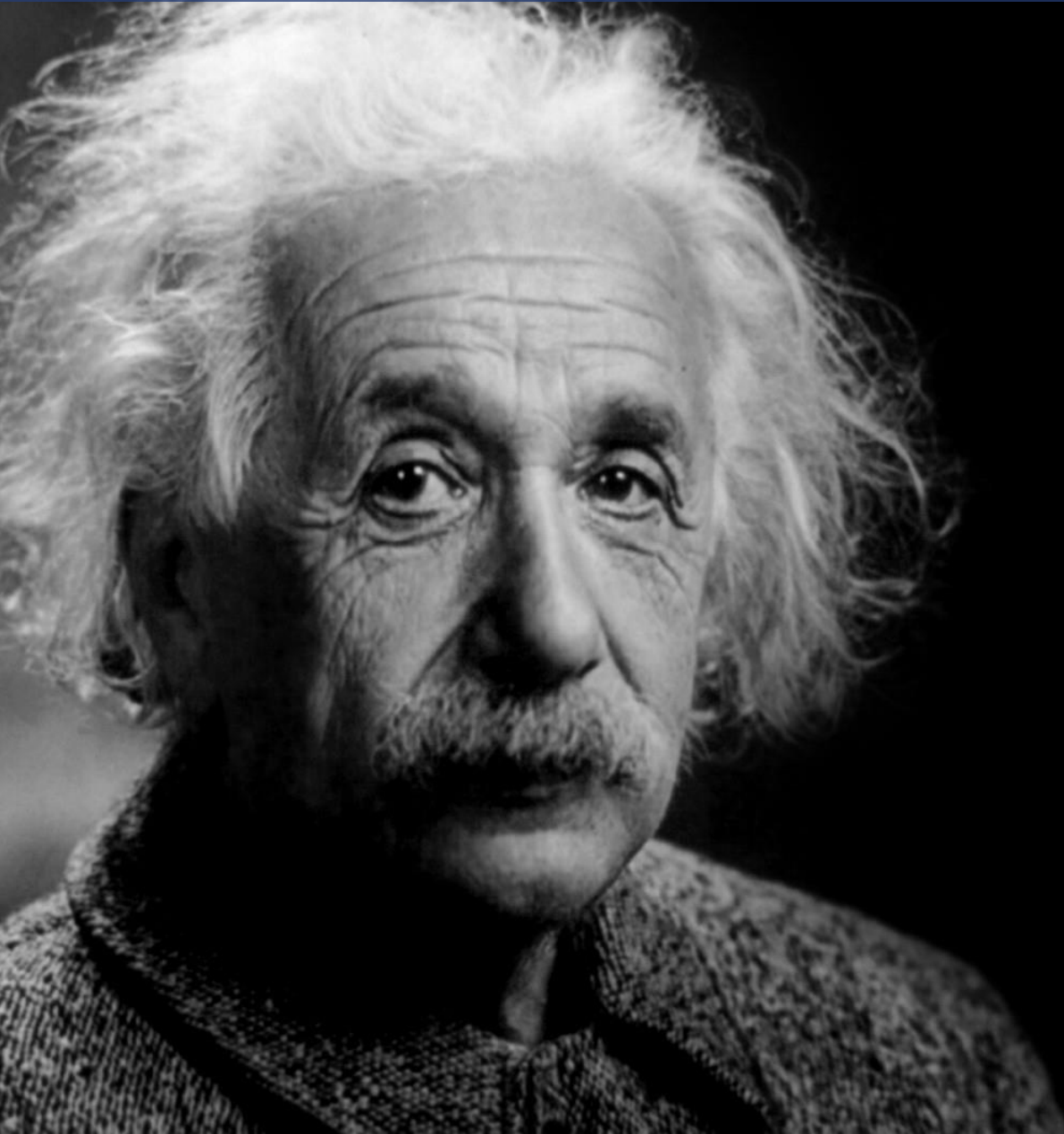
**John Linc Stine, Commissioner**



Minnesota Pollution  
Control Agency

November 1, 2016

# What are we counting, and why?



*Not everything  
that can be  
counted counts.*

*Not everything  
that counts can  
be counted.*

*Albert Einstein*

What are the questions regular people have?

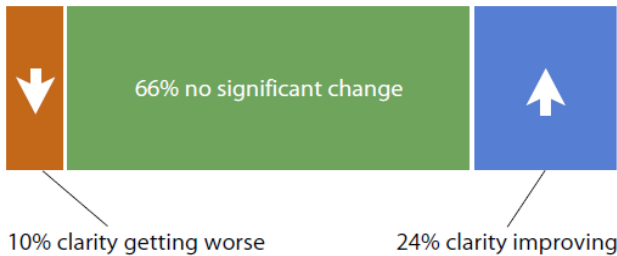


# Asking ourselves good questions

## Are Minnesota's lakes and streams getting cleaner?

Moderate progress

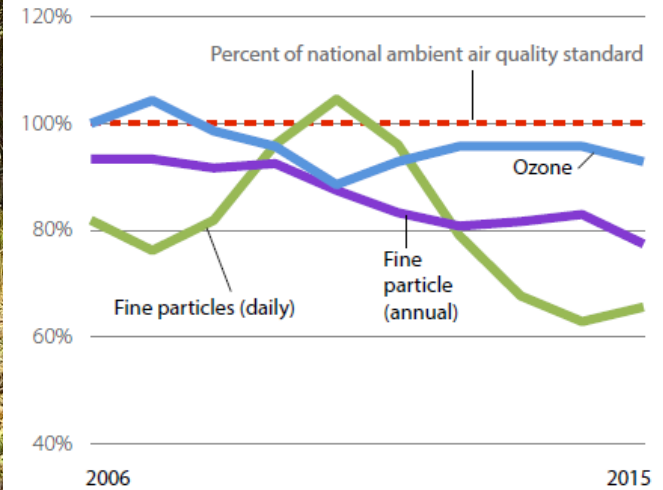
### Clarity changes in Minnesota lakes through 2014



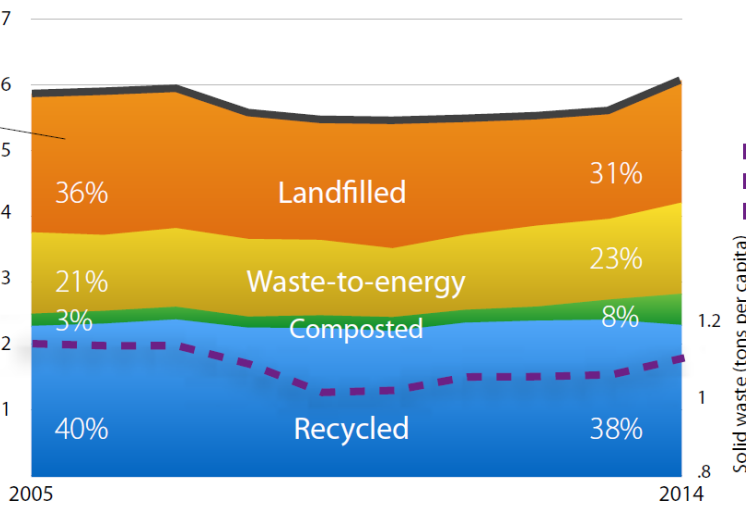
## Is our air healthy to breathe?

Moderate progress

### Key air pollutants in Twin Cities



## What happens to solid waste in Minnesota?



# Water: The Year of Water Action

*“We have a shared responsibility to protect Minnesota’s precious lakes, rivers, and streams for future generations.*

*That starts with fostering an ethic of water conservation in our communities.”*

*-Governor Mark Dayton*

# Water: The Year of Water Action

An aerial photograph showing a wide river with a bridge crossing it. On the left bank, there is a town with various buildings, parking lots, and a marina with many boats. The right bank is densely forested with green trees. The water in the river is a brownish color, while the water in the foreground is dark and rippled.

*"What we do to our land, we do to our water."*

*-John Linc Stine*

*Minneapolis Star Tribune  
October 2, 2016*

# Organics & food waste



# Clean Power Plan



*“The country needs to reduce CO<sub>2</sub> from existing power plants, which generate 40% of America's CO<sub>2</sub>.*

*[The Clean Power Plan] is needed, and the courts, we hope, will recognize that it is on the right side of history.”*

*-William Reilly and William Ruckelshaus*

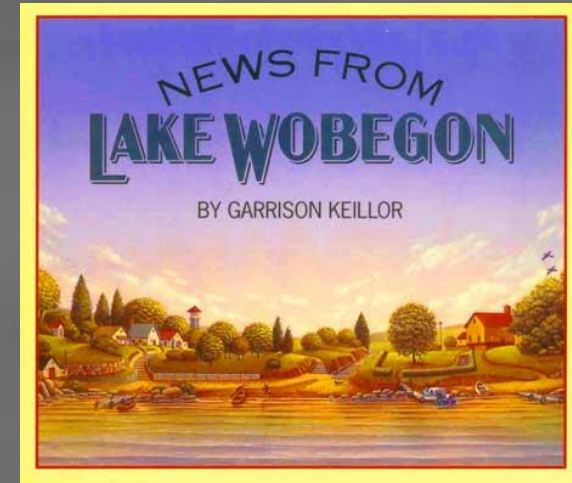
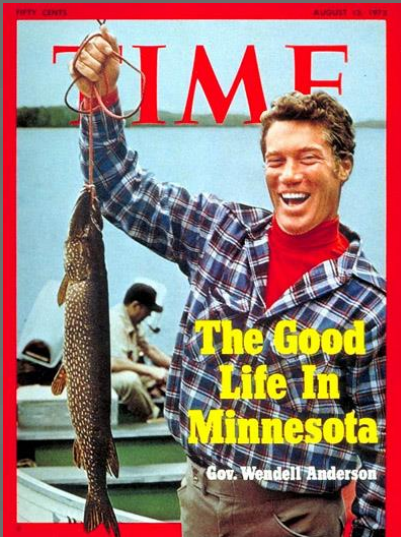
*EPA Administrators under the Republican administrations of George H.W. Bush, Richard Nixon, and Ronald Reagan, in a joint press release responding to the Clean Power Plan*



# The benefits of clean air are not equally distributed, nor equitable.

Minnesota!

Where the women are strong,  
The men are good looking,  
And all our health statistics  
are above average –  
Unless you are  
a person of color or  
an American Indian.



*“The opportunity to be healthy is not equally available everywhere or for everyone.”*

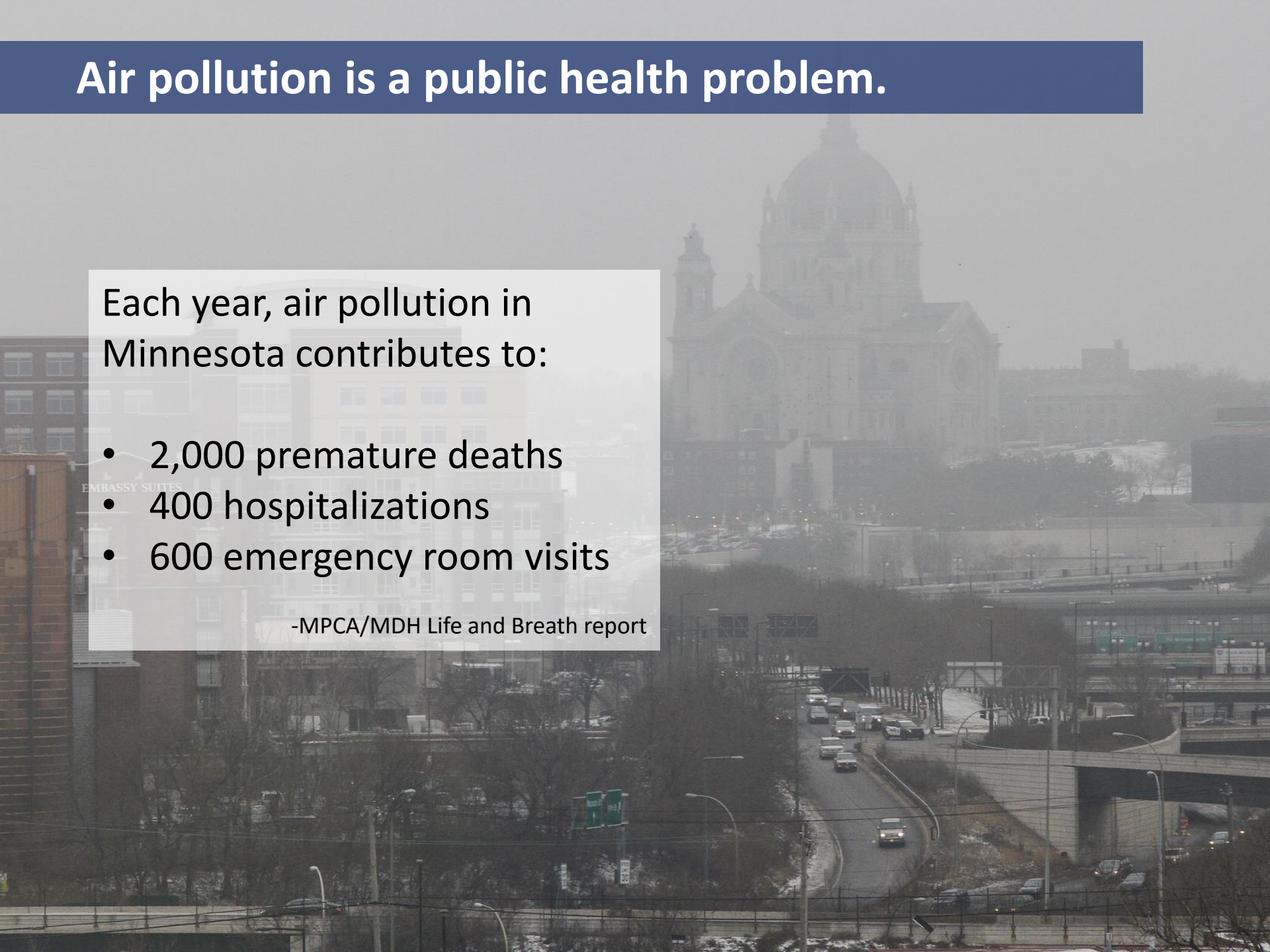
*2014 Advancing Health Equity Report: MN Department of Health*

# Air pollution is a public health problem.

Each year, air pollution in Minnesota contributes to:

- 2,000 premature deaths
- 400 hospitalizations
- 600 emergency room visits

-MPCA/MDH Life and Breath report



**Equity is about creating opportunities for everyone to be healthy .**





**Landfills, soil vapors, construction & demolition.**

# John Linc Stine

## Commissioner



Minnesota Pollution  
Control Agency